

3-PIECE BALLVALVES SERIES 20

Full bore

ISO-mounting pad

Reduced bore

Stainless steel A351CF8M / Carbon steel A216WCB

FIRESAFE certified acc. to BS 6755
In accordance with PED 97/23/EG

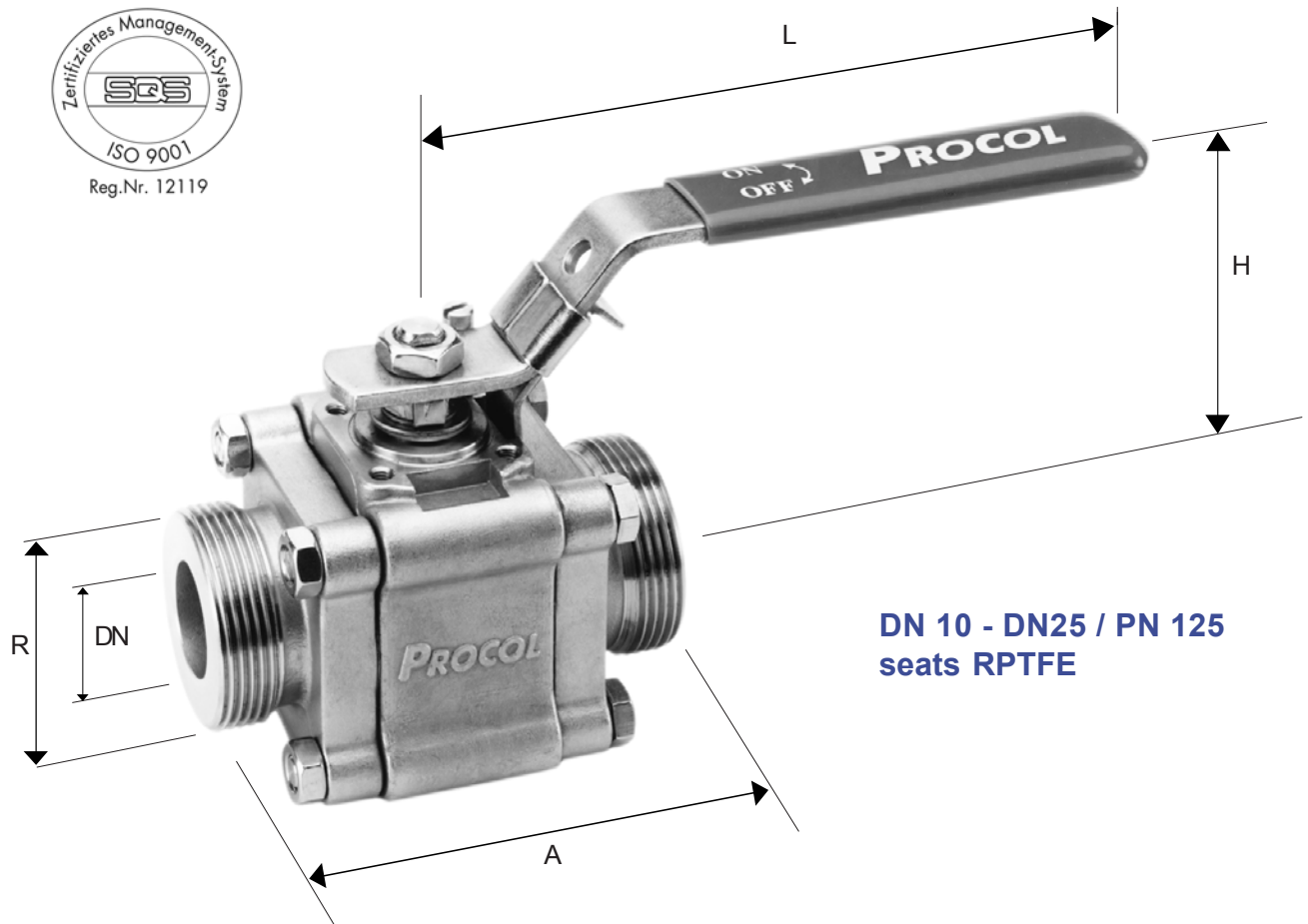
CE 0036



DN 08 - DN 65 / PN 64

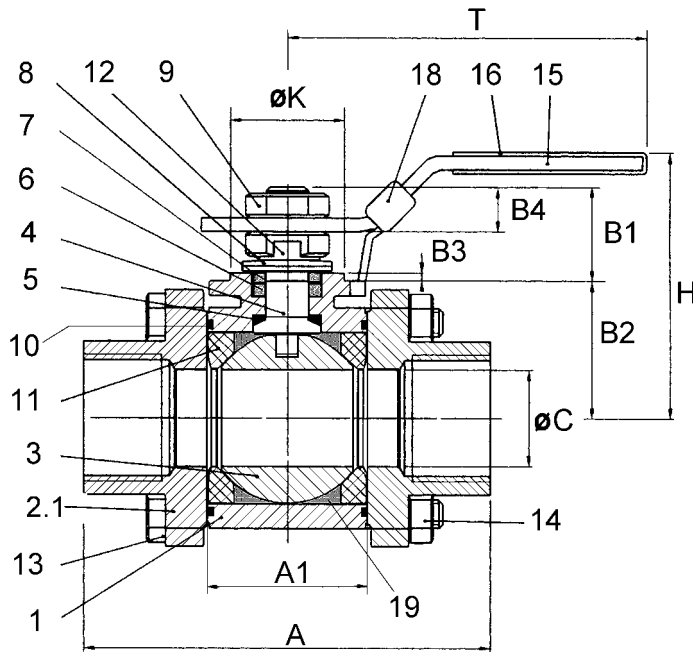
3-PIECE BALLVALVE SERIES 20 , FIG. 22

Full Port - male threaded end caps
stainless steel A351CF8M



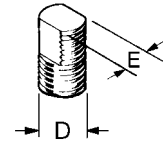
DN 10 - DN25 / PN 125
seats RPTFE

DN	R	A	L	H	weight kg
10	3/4"	70	130	64	0.65
15	1"	85	130	70	0.90
20	1 1/4"	100	130	80	1.50
25	1 1/2"	110	165	80	2.25

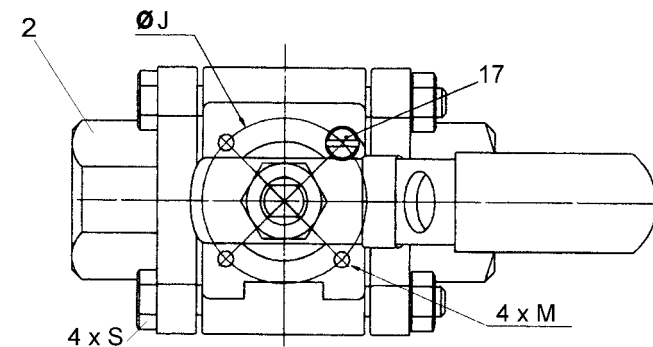


Typ A20

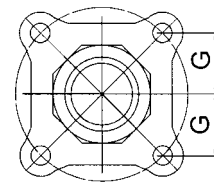
anti-static



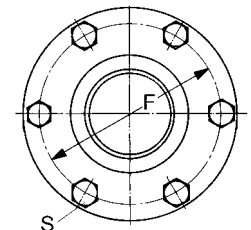
Stem



encapsulated bolts
DN 8 - DN 40 full bore



DN15-50 red. bore
DN 8-40 full bore



DN 65 red. bore
DN 50 full bore

		Stainless steel	Carbon steel
1	Body	A351CF8M	A216WCB
2	Screwed end	A351CF8M	A216WCB
2.1	BW end	A351CF3M	A216WCB
3	Ball	316	316
4	Stem	316	316
5	Stem seal	PTFE	PTFE
6	Stem packing	PTFE/carbon	PTFE/carbon
7	Stem seal follower	304	304
8	Belleville washer	301	301
9	Stem nut	304	304
10	Bodyseal	RPTFE	RPTFE
11	Seat	RPTFE (standard)	RPTFE (standard)
12	Lock saddle	304	304
13	Bolt	304	304
14	Bolt nut	304	304
15	Handle	304	304
16	Handle sleeve	Vinyl	Vinyl
17	Stop pin	304	304
18	Locking device	304	304
19	Body cavity fillers (Option)	PTFE	PTFE

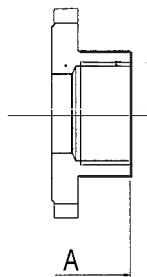
Reduced bore

04/01

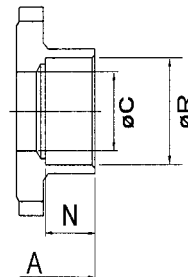
DN	A	A1	B1	B2	B3	B4	ØC	ØD UNF	E	ØF	G	H
15-1/2"	65	20,6	7	29,8	0,5	5,5	10	9,5-3/8"	6,5	-	15,9	64
20-3/4"	75	24,6	16,6	29	2	7,4	15	9,5-3/8"	6,5	-	19,1	70
25-1"	90	31,7	18,5	33	2	8,5	20	9,5-3/8"	6,5	-	22,1	77
32-11/4"	110	41,3	24,7	36	2	11,7	25	11,1-7/16"	8	-	25,1	83
40-11/2"	115	48,4	24,4	40	2	10	32	11,1-7/16"	8	-	28,6	88
50-2"	130	56,3	29,5	47,5	2	11,6	38	14,3-9/16"	9,6	-	33,3	105
65-21/2"	145	71,5	26,5	69,5	1,5	12,5	50	14,3-9/16"	9,7	114	-	122

DN	ØJ	ØK	M	N	ØP	ØP1 SCH40	ØP1 ISO	ØR	S	T	ISO 5211	wght. kg
15-1/2"	36	25	M5	10	21,7	15,76	18,1	21,7	M6	134		0,7
20-3/4"	36	25	M5	10	27,2	20,96	23,7	27,3	M6	134	F03	0,9
25-1"	36	25	M5	13	34	26,64	29,7	34,1	M8	134	F03	1,4
32-11/4"	42	30	M5	13	42,7	35,08	38,4	42,8	M8	170	F04	2,1
40-11/2"	42	30	M5	13	48,6	40,94	44,3	48,7	M10	170	F04	2,8
50-2"	50	35	M6	13	60,5	52,51	56,3	61	M10	207	F05	4
65-21/2"	50	35	M6	16	76,1	65,70	71,5	77	M12	207	F05	5,7

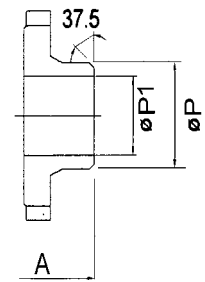
Screwed end BSPP, NPT



SW = socket weld end



BW = Butt weld end

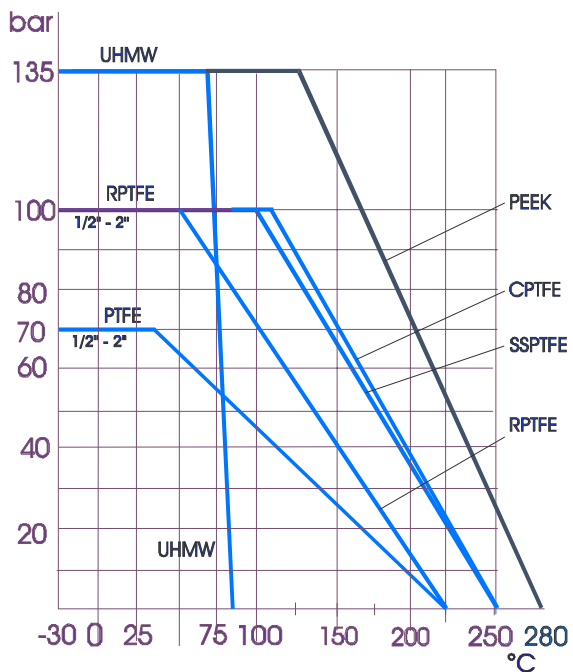


Full bore

DN	A	A1	B1	B2	B3	B4	ØC	ØD UNF	E	ØF	G	H
8-1/4"	65	20,6	7	29,8	0,5	5,5	10	9,5-3/8"	6,5	-	15,9	64
10-3/8"	65	20,6	7	29,8	0,5	5,5	10	9,5-3/8"	6,5	-	15,9	64
15-1/2"	75	24,6	16,6	29	2	7,4	15	9,5-3/8"	6,5	-	19,1	70
20-3/4"	90	31,7	18,5	33	2	8,5	20	9,5-3/8"	6,5	-	22,1	77
25-1"	110	41,3	24,7	36	2	11,7	25	11,1-7/16"	8	-	25,1	83
32-11/4"	115	48,4	24,4	40	2	10	32	11,1-7/16"	8	-	28,6	88
40-11/2"	130	56,3	29,5	47,5	2	11,6	38	14,3-9/16"	9,6	-	33,3	105
50-2"	145	71,5	26,5	69,5	1,5	12,5	50	14,3-9/16"	9,7	114	-	122

DN	ØJ	ØK	M	N	ØP	ØP1 SCH40	ØP1 ISO	ØR	S	T	ISO 5211	wght. kg
8-1/4"	36	25	M5	10	13,7	9,24	10,3	14,1	M6	134	F03	0,7
10-3/8"	36	25	M5	10	17,5	12,53	14	17,6	M6	134	F03	0,7
15-1/2"	36	25	M5	10	21,7	15,76	18,1	21,7	M6	134	F03	0,9
20-3/4"	36	25	M5	13	27,2	20,96	23,7	27,3	M8	134	F03	1,4
25-1"	42	30	M5	13	34	26,64	29,7	34,1	M8	170	F04	2,1
32-11/4"	42	30	M5	13	42,7	35,08	38,4	42,8	M10	170	F04	2,8
40-11/2"	50	35	M6	13	48,6	40,94	44,3	48,7	M10	207	F05	4
50-2"	50	35	M6	16	60,5	52,51	56,3	61	M12	207	F05	5,7

Pressure / temperature graph for full bore valves



Code	Material	Seats
T	PTFE	PTFE virgin
R	RPTFE	PTFE glass reinforced
C	CPTFE	PTFE carbon reinforced
S	SSPTFE	PTFE stainless steel reinf.
P	PEEK	
U	UHMW	Polyethelene Ultra high molecular
Material bodyseals		
R	RPTFE	PTFE glass reinforced
G	Graphite	
Material stem packing		
C	CPTFE	PTFE carbon reinforced
G	Graphite	

Sample article code

0 2 6 1 5 . 6 0 0 R

0	Carbon steel
2	Stainless steel
6	End (4 = BSPP, 5 = NPT, 6 = BW SCH40, 7 = BW ISO, 8 = BW OD, 9 = SW)
15	Size
6	End
00	Special
R	Code

Size DN	Reduced bore	Full bore	Code	Seat	Body- seal	Stem packing
8	-	11	R (standard)	R	R	C
10	-	12	C	C	R	C
15	03	13	F (firesafe)	C	G	G
20	04	14	T	T	R	C
25	05	15	P	P	G	G
32	06	16	W	R	G	C
40	07	17				
50	08	18				
65	09	-				

C_v - values (gallon/min.) for reduced bore valves

C_v = volume of water that will pass through a valve at a pressure drop of 1 bar

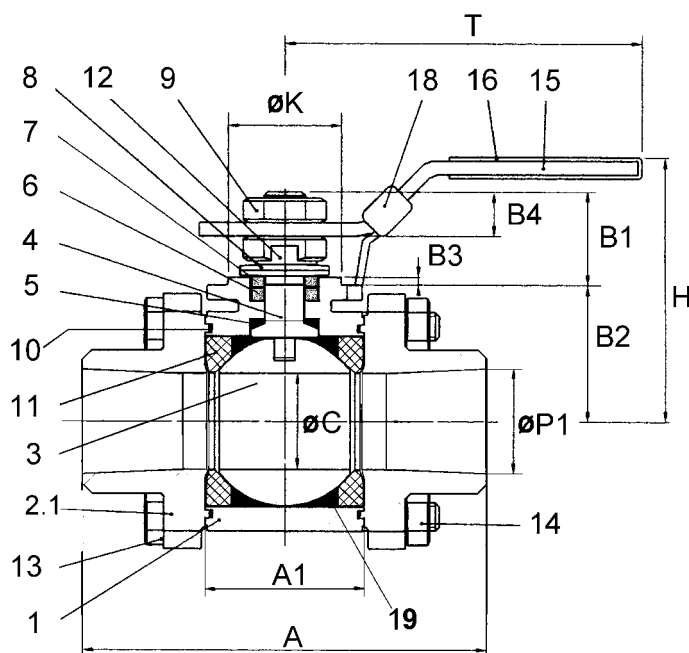
DN	8-15	20	25	32	40	50	65
C _v	8	13	32	58	82	111	235

Break torques (Nm)

DN	8-10	15	20	25	32	40	50	65
red. bore	-	6	10	15	18	28	37	48
full bore	6	10	15	18	28	37	48	-

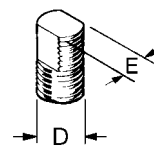
Body and seat pressure tests according to DIN 3230 BA/BO

Shelltest 1,5 x PN (water) Seattest 0,5 bar by air

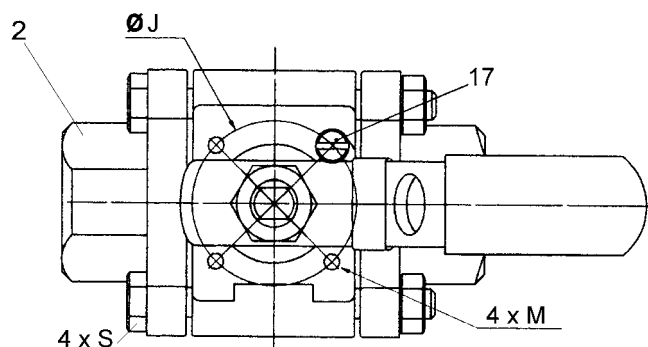


Typ AF20

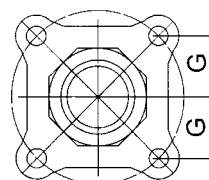
antistatic firesafe



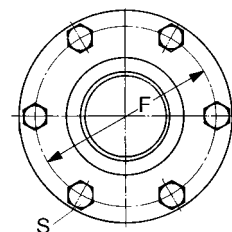
Stem



encapsulated bolts
DN 8 - DN 40 full bore



DN15-50 red. bore
DN 8-40 full bore



DN 65 red. bore
DN 50 full bore

		Stainless steel	Carbon steel
1	Body	A351CF8M	A216WCB
2	Screwed end	A351CF8M	A216WCB
2.1	BW end	A351CF3M	A216WCB
3	Ball	316	316
4	Stem	316	316
5	Stem seal	PTFE	PTFE
6	Stem packing	Graphite	Graphite
7	Stem seal follower	304	304
8	Belleville washer	301	301
9	Stem nut	304	304
10	Bodyseal	Graphite	Graphite
11	Seat	PTFE/carbon	PTFE/carbon
12	Lock saddle	304	304
13	Bolt	304	304
14	Bolt nut	304	304
15	Handle	304	304
16	Handle sleeve	Vinyl	Vinyl
17	Stop pin	304	304
18	Locking device	304	304
19	Body cavity fillers (Option)	PTFE	PTFE