

3-PIECE BALL VALVES SERIES 30

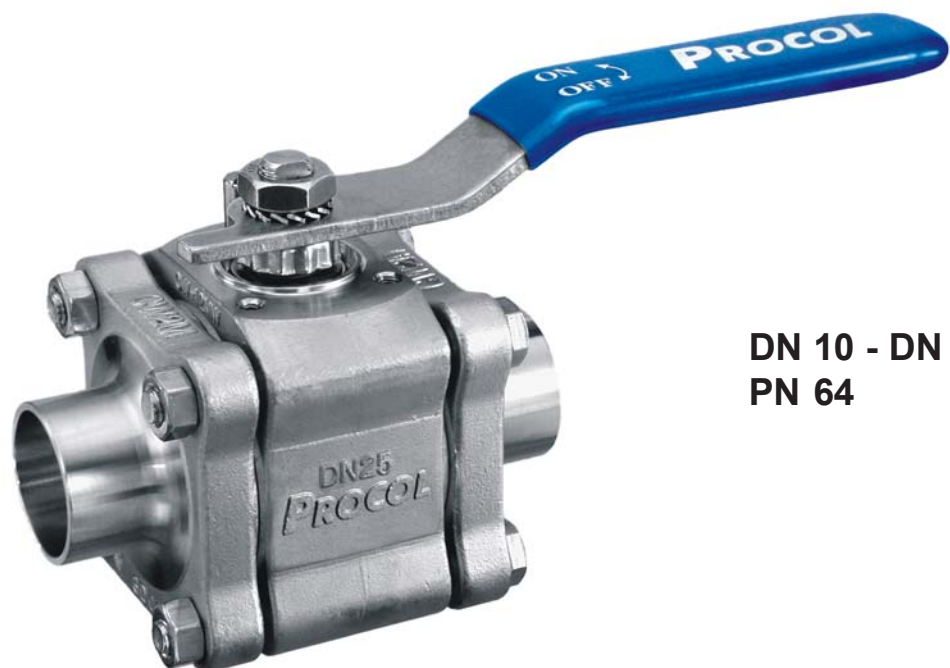
Hastelloy A494 CW 2MW - H C-276 / 2.4819

Hastelloy A494 CW 12MW - 2.4537

Full bore Firesafe design

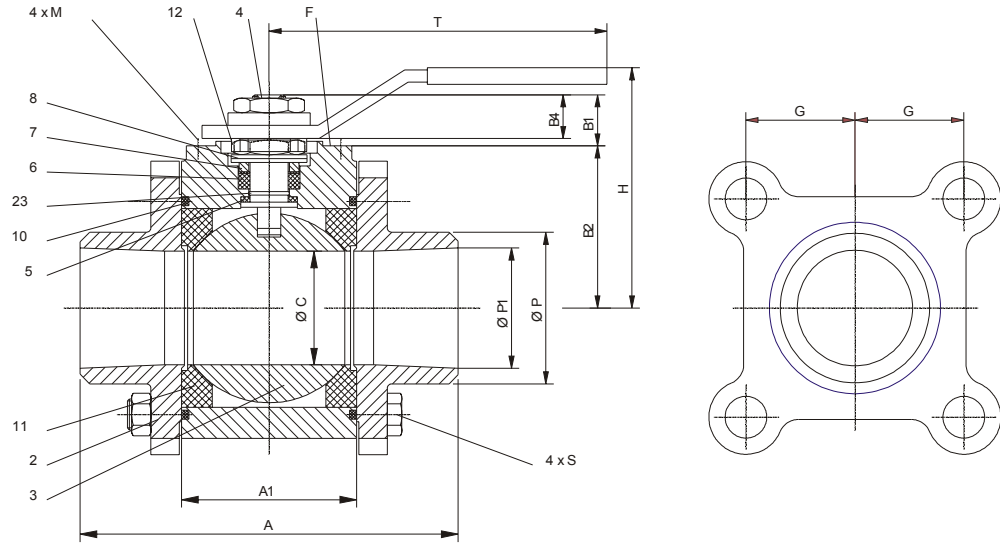
In accordance with PED 97/23/EC
CE 0036

In accordance with ATEX 94/9/EC

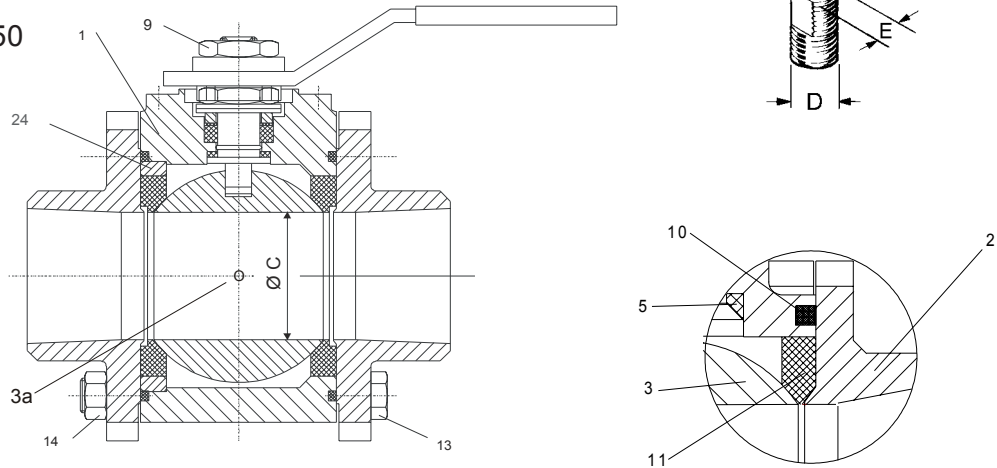


DN 10 - DN 50
PN 64

DN10 - DN 40



DN 50



Pressure release bore 3a

Ball Item 3 with pressure release bore has to be ordered separately.
Assembling the pressure release ball pay attention to place the relief bore on upstream side, in accordance with the flow direction indication arrow on the body.

Mode of action of the pressure relief bore

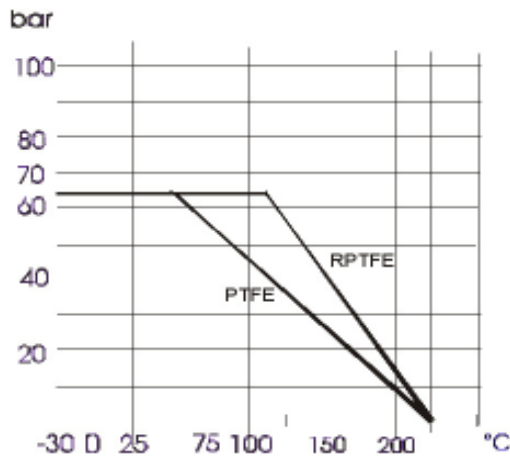
When the ball valve is in the closed position, the inner room of the ball is connected with the piping through the pressure relief bore; this ensures a pressure compensation.
When ordering a ball valve with pressure relief bore, the flow direction indicating arrow on the body points to the pressure relief bore when the ball is in the closed position.

		Type 30	Type 30 fire safe design
1	Body	A494 CW12MW (2.4537)	A494 CW12MW (2.4537)
2	Butt weld end	A494 CW2MW (HC-276/2.4819)	A494 CW2MW (HC-276/2.4819)
2	Screw end	A494 CW12MW (2.4537)	A494 CW12MW (2.4537)
3	Ball	A494 CW12MW (2.4537)	A494 CW12MW (2.4537)
3a	Pressure release bore	option	option
4	Stem	A494 CW 12MW (2.4537)	A494 CW 12MW (2.4537)
5	Stem seal	PTFE	PTFE
6	Stem packing	PTFE/CPTFE	Graphite
7	Stem seal follower	1.4401	1.4401
8	Belleville washer	1.4310	1.4310
9	Nut	CrNi, A2-70	CrNi, A2-70
10	Body seal	PTFE chambered	Graphite chambered
11	Seat	PTFE (standard), RPTFE opt.	PTFE (standard), RPTFE opt.
12	Nut / saddle lock	1.4301	1.4301
13/14	Screw / nut	A2-70	A2-70
15/16	Handle / Sleeve	1.4301 / PVC	1.4301 / PVC
23	Secondary seal	option, Viton / PTFE	option, Viton / PTFE
24	Retaining ring, DN 50	A494 CW 12MW (2.4537)	A494 CW 12MW (2.4537)

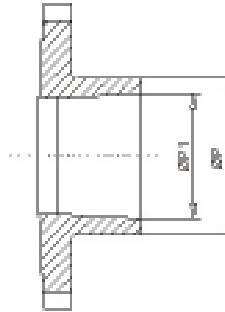
DN	A	A1	H	T	M	F	ØC	ØP DIN/ISO	ØP1 ISO	ØP1 DIN
10-3/8"	67.3	20.7	45	120	M5	F03	10	17.2	14	13.6
15-1/2"	71.2	24.6	48	120	M5	F03	15	21.3	18.1	17.3
25-1"	108	41.3	66	147	M5	F04	25.4	33.7	29.7	28.5
40-11/2"	128	56.3	84	182	M6	F05	38.1	48.3	44.3	43.1
50-2"	151.2	72.6	93	272	M6	F05	50.8	60.3	56.3	54.5

DN	Ø P SCH10	Ø P1 SCH10	E	Ø D	B1	B2	B4	G	4xS	weight kg
10-3/8"	17.15	13.85	5.5	3/8"-UNF	10.6	31.6	7.5	15.9	M6x45	0.7
15-1/2"	21.34	17.12	5.5	3/8"-UNF	10.6	31.6	7.5	19	M6x50	1.0
25-1"	33.4	27.86	7.54	7/16"-UNF	23.6	37.2	14	25.5	M8x75	2.5
40-11/2"	48.26	42.72	8.66	9/16"-UNF	30	48.2	17.5	33	M10x96	5.1
50-2"	60.33	54.79	8.66	9/16"-UNF	30	58.4	17.5	41.5	M12x120	8.5

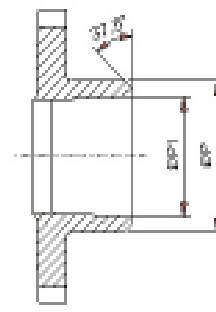
Pressure / Temperature graph
for PTFE and RPTFE seats



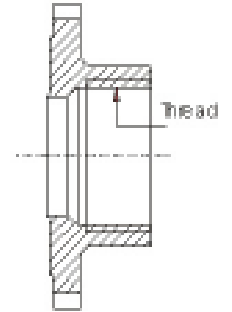
BW weld end
ISO/SCH10



BW end DIN



Thread end BSPP



Properties of Hastelloy C

One of a series of alloys on nickel, cobalt and iron base, known for their high corrosion resistance at high temperatures. Very corrosion resistant to moist chlorine, hydrous chlorine solutions, chlorides and hypo chlorides, sulphur, phosphorous, acetic and formic acid.

The high Molybdenum content makes the alloy particularly resistant to pitting and crevice corrosion. Used in chemical processing, pulp and paper production and waste treatment.

Break torques L_B (Nm) for lubricating medium

DN	10	15	25	40	50
L_B	10	10	18	39	50

Chemical analyse of Hastelloy

A494 CW2 MW

HC-276 / 2.4819

C %	Si %	Mn %	P %	S %	Cr %	Mo %	Ni %
< 0.015	< 0.08	< 1	< 0.025	< 0.015	14.5 - 16.5	15-17	balance
V %	Co %	Fe %	Cu %	W %			
< 0.35	< 2.5	4-7	< 0.5	3-4.5			

A494 CW12 MW

2.4537

C %	Si %	Mn %	P %	S %	Cr %	Mo %	Ni %
< 0.1	< 1	< 1	< 0.045	< 0.03	14 - 18	15-18	> 52
V %	Co %	Fe %	Cu %	W %			
< 0.2-0.4		< 7	< 0.5	3 - 5			

Allowed Vacuum of the series 30 ball valves

0.1 mbar / 150°C

Body and seat pressure test of the series 30 ball valves

according to DIN 3230 BA/BO

subject to change 03/09